

CFCCA  
E O H O R  
N R I N T  
T N T  
R E E  
E S M  
E P  
O  
R  
A  
R  
Y

Centre for Contemporary Chinese Art (CFCCA)  
Manchester  
M4 1EU  
[www.cfcca.org.uk](http://www.cfcca.org.uk)  
T +44 (0)161 832 7271



Faye Wei Wei, Yes No (2018) image courtesy of artist and Cob Gallery.

**PRESS RELEASE**

**April 2018**

**CFCCA presents**

**Faye Wei Wei**

**Gallery 2**

**FREE Entry**

**11 May – 8 July 2018**

**Preview:**

**6pm – 8pm**

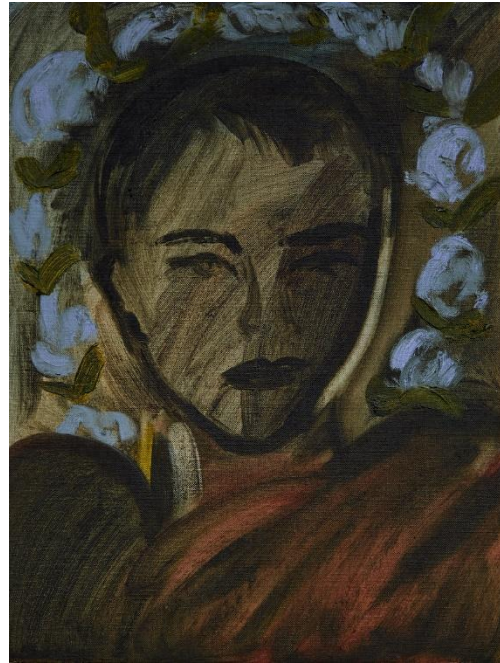
**Thursday 10 May**

**Centre for Chinese Contemporary Art (CFCCA) to exhibit new paintings by Faye Wei Wei**

**The collection of new works form part of CFCCA's Concepts of Gender season.**

Recently graduated from the Slade School of Fine Art in 2016, 23-year old Faye Wei Wei is a young painter whose passion and energy has earned her considerable attention in the public eye. Faye's large-scale figurative artworks draw you into an imaginative and painterly world that brings together symbolism, mystery and mythology. Wei Wei sees her mark-making as the record of vast sequences of gesture and movement. Her painting has a sense of enjoyment, revelling in the beauty of the unassuming and unexpected.

This brand new collection of artwork, created over the past six months marks a development in Wei Wei's artistic practice, with experiments in unorthodox colour palettes which complement her characteristically bold and swooping brush strokes. The imagery continues to be about texture, physicality and the pleasure of representation as the actual subject-matter in itself.



Faye Wei Wei, 1 2 3 4 5 6 7 8 9 10 (2018) image courtesy of artist and Cob Gallery (L) Faye Wei Wei, From the Centre of the Rose (2018) image courtesy of artist and Cob Gallery.

In its interplay of detail and spaciousness, Wei Wei's work is acutely aware of the way more than one space can exist at the same time. Along with figures who rest on the plane nearest to the viewer, her compositions are populated by an array of unexpected objects often inspired by real life discoveries by the artist. Sea urchins, luxurious and repellent, fuse abrasiveness with a suggestion of tender sensuality. A dog-shaped puppet, found in Manhattan's Chinatown, is draped around the shoulders of a figure who may be the artist itself. A merman derived from an old box of matches fills in for the 'Fisher King,' alluding to the fertility myth cited by T. S. Eliot in his notes to *The Waste Land*.

This exhibition in Gallery 2, runs alongside a solo show of video works by artist Shen Xin, including a new commission, as part of CFCCA's 'Concepts of Gender' season. Both shows are curated by Tiffany Leung. The preview evening for both shows will take place on Thursday 10 May, 6pm to 8pm.

**For further information, images and interview requests for the artist please contact Emma Bosworth on +44 (0)161 32 7271 or email [emma.b@cfcca.org.uk](mailto:emma.b@cfcca.org.uk)**

**- END -**

Notes to Editors –

**Centre for Chinese Contemporary Art (CFCCA)** in Manchester, is the national lead in exploring Chinese contemporary art and visual culture. It has a proud 33 year history in supporting artists from China, Hong Kong, Taiwan and the Diaspora through a varied programme of exhibitions, events, artist residencies and exchanges, collaborations, engagement projects and research.

Gallery opening times are Tuesday to Sunday, 10am to 5pm (Closed Mondays)

CFCCA is supported with public funding from the Arts Council as a National Portfolio Organisation, and regularly funded by the Greater Manchester Authority.

[www.cfcca.org.uk](http://www.cfcca.org.uk)

**Faye Wei Wei**, represented by Cob Gallery, London, graduated from the Slade School of Fine Art in 2016, where she was awarded the Cass Art Painting Prize. Her first solo exhibition was 'Anemones and Lovers' at Cob Gallery in April 2017. She has featured in group shows including Eclectic Dreamers, Siegfried Contemporary, London; Summer Blue, Lychee One Gallery, London (2016), 'Winter In America', Moms Favorite Space, California; FBA Futures, Mall Galleries, London (2017). She completed the Hoy Hoy residency in New York in 2016, and most recently her work was shown as part of a duo exhibition - 'Marzanna, Yours Again' with Zoe Paul at Hot Wheels, Athens (2018) and a group exhibition 'To a God Unknown' with Mrs. Gallery New York (2017).

In September 2017 Wei Wei collaborated with fashion label Shrimps on Spring / Summer Collection 2018 to create a new body of work that featured at London Fashion Week.

<https://www.cobgallery.com/artists/27-faye-wei-wei/overview/>

**Full image selection can be accessed here: <https://we.tl/mliw3ZxXWc>**